



Technician Certification

At PEARL, we believe in the power of education to transform lives. Our online courses are for PEARL Accredited Companies only and are designed to set you on a path to career excellence.

### Focused, Relevant Curriculum

Our courses are meticulously designed by experts in the electrical equipment reconditioning industry, ensuring that you gain the most current and in-demand skills. We offer three levels of training:



### Learn at Your Pace

Our innovative platform empowers you to take control of your education. With the PEARL Technician Certification Program, you can learn at your own pace – our courses are accessible 24/7, ensuring that you can learn when it's most convenient for you.

### Industry-Recognized Credentials

Our program has earned recognition across the industry for its comprehensive curriculum and the real-world applicability of its training. Endorsed by leading professionals and organizations, it stands as a testament to our commitment to excellence, safety and relevance.



Obtaining my PEARL certification has enhanced my career trajectory. The in-depth material presented across the various levels has profoundly impacted my proficiency in our industry. While the program is rigorous, the training modules prepare you for the exam. I would encourage anyone looking to learn more about the industry to enroll in the program.

-Nick Milstead, Shermco



Technician Certification

## Electrical Equipment Reconditioning

## Train. Test. Certify.

*Empower Your Career:  
Online, Self-paced Courses*



## Enroll Today!



[PEARL1.org/Education/](https://PEARL1.org/Education/)

# How It Works

REGISTER NOW >

Select level



Primary Training  
Contact completes  
the confirmation form



Email sent to  
Technician with  
course information



Complete and  
pass all courses



Take Exam\*



Pass exam and  
download certificate

\*The Level 1 exam is an online, non-proctored exam that is certified by the technician's supervisor. The Level 2 & 3 exams are in-person or virtually proctored.

## Level 1

\$500

### Modules:

- Component Evaluation
- Contactors
- Insulated Case Breakers
- Low Voltage Control
- Low Voltage Distribution Equipment
- Low Voltage Fuses
- Molded Case Breakers - Part 1
- Operator Devices
- Technician Safety
- Transformers
- Variable Frequency Drives



## Level 2

\$600

### Modules:

- Busway and Bus Plugs
- Electrical Conduit Fittings
- Low Voltage Power Breakers
- Medium Voltage Control
- Medium Voltage Fuses
- Medium Voltage Switchgear
- Molded Case Breakers - Part 2
- Motor Control Centers
- Pilot Devices
- Protective Relays
- Test Equipment
- Transformers



## Level 3

\$800

### Modules:

- Supervisory Skills
- PEARL Standards
- Interpret Drawings & Specs
- Anti-Counterfeiting
- Safety Environment



# Eligibility

## Level 1: Entry Level

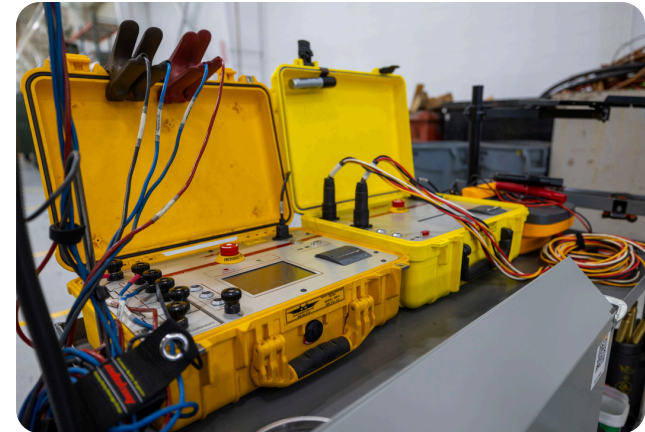
- High School Diploma/GED

## Level 2: Journey Technician

- Level 1 Certificate
- High School Diploma/GED
- 20 Hours Safety Training
- 40 Hours Electrical Training
- 2 Years Work Experience

## Level 3: Lead Technician

- High School Diploma/GED
- Additional 24 Hours Safety Training
- 5 Years Work Experience



# Certification

PEARL Certifications do not expire as long as the technician is working for a PEARL Accredited Company (PAC). The \$75 fee is invoiced to the PAC annually to maintain certification status.

For more information:  
[PEARL1.org/Education/](http://PEARL1.org/Education/)

